



**hometech**<sup>TM</sup>  
The Ventilation Specialists

a division of Just Life Group Ltd



**Just Life**  
Group

**PRODUCT TECHNICAL SPECIFICATION  
for Kāinga Ora - Homes & Communities**

**2023**





**hometech**<sup>TM</sup>  
The Ventilation Specialists

a division of Just Life Group Ltd

# PRODUCT TECHNICAL SPECIFICATION

FOR KĀINGA ORA - HOMES & COMMUNITIES

## WHAT WE CAN DO FOR YOU

### PROVEN PERFORMANCE

Hometech is a long-established New Zealand business who has been supplying mechanical ventilation and natural lighting into Kāinga Ora (previously known as Housing New Zealand) homes across New Zealand since 2003.

Our certified installers are specialists and we provide on-going training to ensure that our quality exceeds the client's expectations.

### DESIGN & SPECIFICATION

With our in-house team for new builds and existing dwellings, and a range of standard systems we make it easier for specifiers to choose the right product. All systems comply with New Zealand Building Code. Further information can be found on the Hometech website [www.hometech.co.nz](http://www.hometech.co.nz)

### PROJECT MANAGEMENT

We project manage our installations from the beginning to end, whether that be new or existing dwellings. Our nationwide service to Kāinga Ora includes project management to ensure delivery of product & installation performance.

### CONTACT

Luan Howitt  
027 336 8346  
[Luanh@justlife.co.nz](mailto:Luanh@justlife.co.nz)





**hometech**<sup>™</sup>  
The Ventilation Specialists

a division of Just Life Group Ltd

# PRODUCT TECHNICAL SPECIFICATION

FOR KĀINGA ORA - HOMES & COMMUNITIES

## CONTENTS

### 1. KITCHEN ALTERNATIVE VENTILATION

- 1.1 Kitchen Rangehood Alternative - Ceiling Filter Box - RH-FILPAN-TR
- 1.2 Kitchen Fan Box - Ground level install of two level - property - RH-BOXWHT-90-TW

### 2. BATHROOM / LAUNDRY VENTILATION

- 2.1 Bathroom Mechanical Extract Ventilation with Delay Timer - EX-BUCKM-TR-HF-T
- 2.2 Bathroom Mechanical Two Room Extract Ventilation - EX-2IL-TR-HF-T
- 2.3 Bathroom Mechanical Extract Ventilation - Flat Roof - EXILTRHFT
- 2.4 Mechanical Extract Wall Mounted Fan - through Wall - EX-SURM-TW-HF-T



## PRODUCT DESCRIPTION

In-line extract fan exhausting from filter box at ceiling, to exterior roof-line for installations where there is a window above the stove. The system provides a maximum exhaust rate of 650m<sup>3</sup>/hr and is suitable for filtering grease and the extraction of steam or odours when cooking. The filter is removable for easy cleaning or replacement.

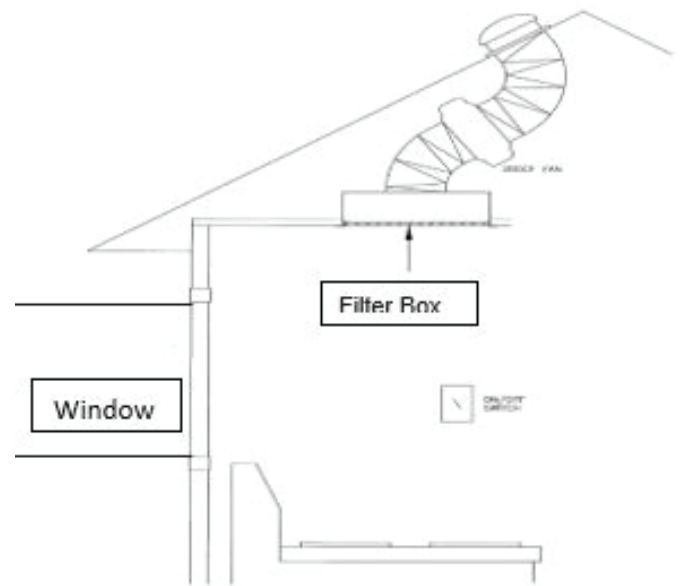
## APPLICATIONS

\*This system is suitable, but not limited to the following areas:

- when a window is directly to rear of the stove
- the stove is positioned on a cooking island workstation or half wall

## SPECIFICATION MODEL: RH-FILPAN-TR

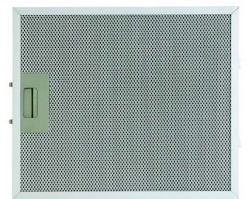
Airflow	650m <sup>3</sup> /h
Diameter	150 Ø
Duct Run	Up to 6m
Installation Location	Kitchen
Minimum Roof Clearance	500mm
Rooms Served	One
Ventilation Type	Kitchen Extract
Filter	Grease Filter
Control	Wall switch



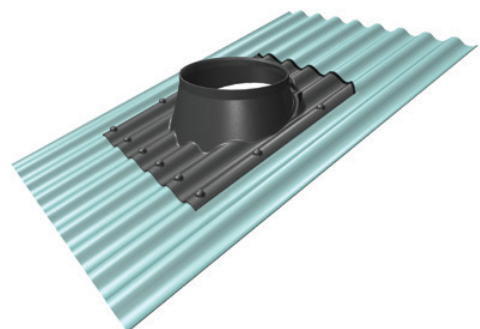
## STANDARD COMPONENTS



In-line Fan



Filter ATFL5382601



Branz Appraised Roof Flashing. Appraisal No. 665; 2017

## LIMITATIONS

---

- Requires a ceiling void of more than 500mm
- Filter box may not be exactly centred over the stove due to ceiling joists.
- Cannot be installed when a kitchen is on the ground.

## INSTALLATION

---

To be carried out by Hometech to manufacturer's recommendations

- To be ducted vertically to exterior with proprietary Hometech roof flashing and cowl wherever possible.
- Installed over the cook-top within the safe zone.

## PERFORMANCE & HOMESTAR® RATING

---

- The System extracts 650m<sup>3</sup>/h at Rangehood intake for Ø150mm flexible duct lengths up to 6m; when installed correctly with no access length and minimal bends.
- Homestar V4 - A kitchen extract hood ducted to outside is mounted over the main steam source in the kitchen.
- Exceeds G4 - 50l/s for cooktops (180m<sup>3</sup>/h)  
<https://app.nuclino.com/login>  
login : kaingaora@hometech.co.nz  
password: Hometech2020

## WARRANTY

---

- Mechanical extract fan & filter box - 5 years
- Roof flashing - 10 years

## PRODUCT DESCRIPTION

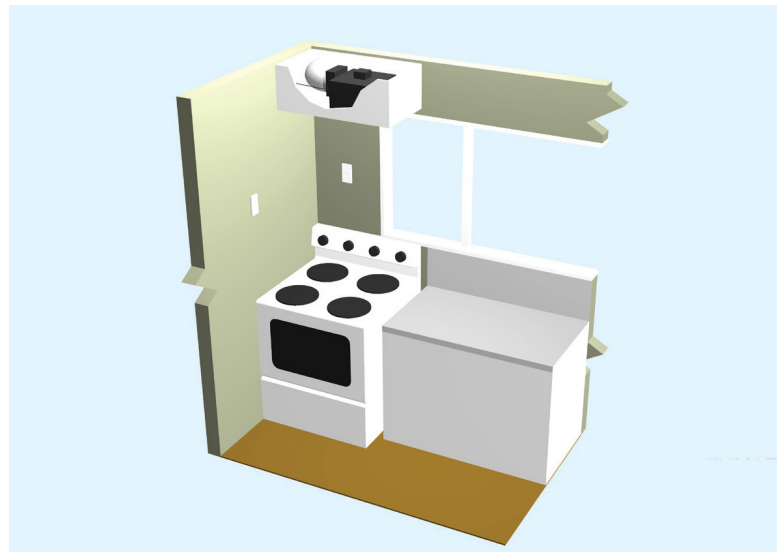
Provide kitchen fan box mechanical extract ventilation to exterior wall. Dimensions 907L x 310H x 410D. The fan box is fitted with a centrifugal fan and rangehood filter that is suitable for the filtering of fat, grease and the extraction of steam or odours when cooking. The filter is removable for easy cleaning or replacement.

## APPLICATIONS

\*This system is suitable, but not limited to the following areas:

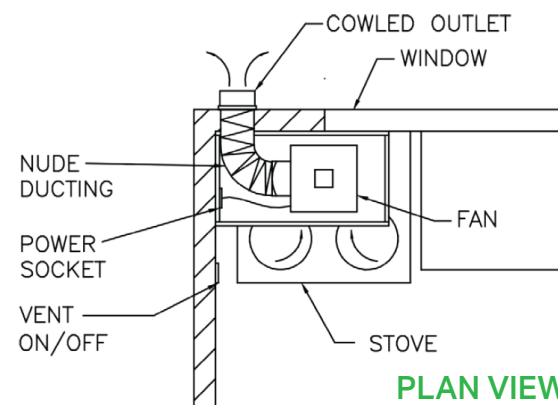
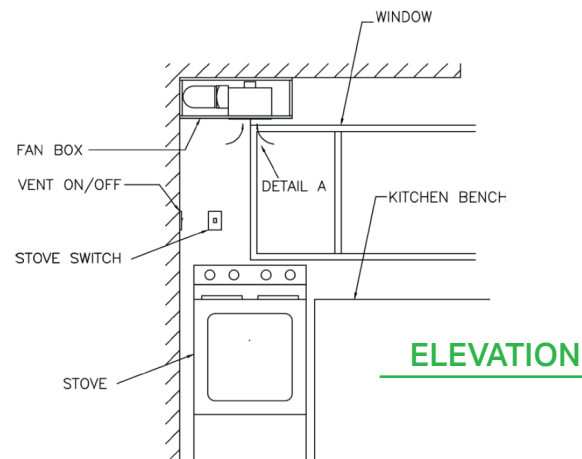
The Fan Box is an alternative to a rangehood, where the procurement item RH-CANWHT-60-TR Rangehood or a Ceiling Filter Box (RH-FILPAN-TR) cannot be installed in situations such as:

- When a window is directly behind the stove in the ground level of a two level property. The wall space must be less than 497mm which is the standard space for a rangehood installation.
- Can be used in single level installations when no other system is suitable.
- Vents to exterior wall using 150mm centrifugal fan.



## SPECIFICATION MODEL: RHBOXWHT-90-TW

Airflow	420m <sup>3</sup> /h
Diameter	150 Ø
Duct Run	Up to 6m
Installation Location	Kitchen
Minimum Roof Clearance	NA
Rooms Served	One
Ventilation Type	Kitchen Extract
Filter	Grease filter
Control	Wall switch



## LIMITATIONS

---

- Electrical supply may require surface capping.
- Additional costs may occur when exterior cladding is brick, concrete or asbestos.

## INSTALLATION

---

To be carried out by Hometech to manufacturer's recommendations

- as per scopers guide

## PERFORMANCE & HOMESTAR® RATING

---

- The System extracts 420m<sup>3</sup>/h at Rangehood intake for Ø150mm flexible duct lengths up to 6m; when installed correctly with no access length and minimal bends.
- Homestar V4 - A kitchen extract hood ducted to outside is mounted over the main steam source in the kitchen.
- Exceeds G4 - 50l/s for cooktops (180m<sup>3</sup>/h)  
<https://app.nuclino.com/login>  
login : kaingaora@hometech.co.nz  
password: Hometech2020

## WARRANTY

---

- Mechanical extract fan - 5 years

### PRODUCT DESCRIPTION

Roof mounted fan system venting to external roof cowl, used to provide mechanical bathroom extract ventilation.

System uses a 15 minute run-on. Not suitable as a replacement for kitchen ventilation.

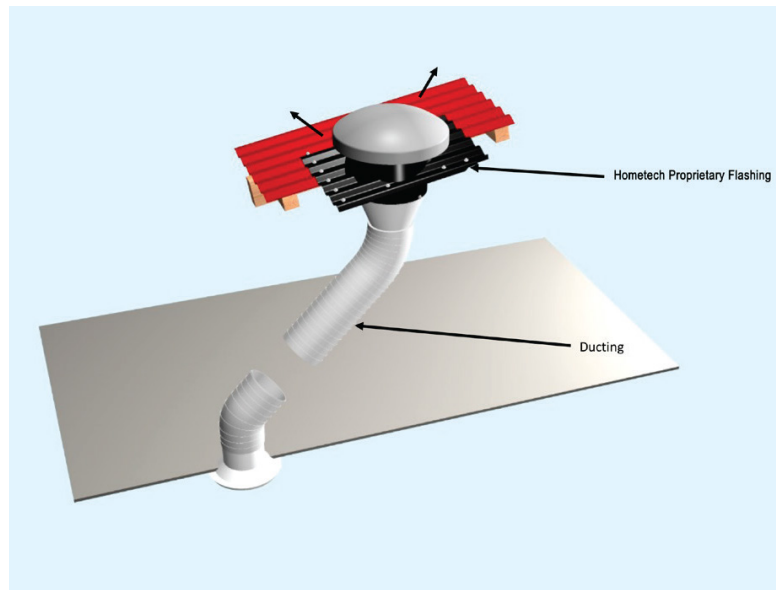
### APPLICATIONS

\*This system is suitable, but not limited to the following areas:

- single level properties
- top floor installations
- in wet rooms
- where a minimum of 350mm of space is available between the ceiling and roof line
- laundries

### SPECIFICATION MODEL: EX-BUCKM-TR-HF-T

Airflow	316.8m <sup>3</sup> /h
Diameter	200 Ø
Duct Run	Up to 3m
Installation Location	Wet rooms
Minimum Roof Clearance	Skuitable for skillion ceilings (see limitations), or 350mm clearance
Rooms Served	One
Ventilation Type	Extract
Filter	NA
Control	Wall switch, 15min timer



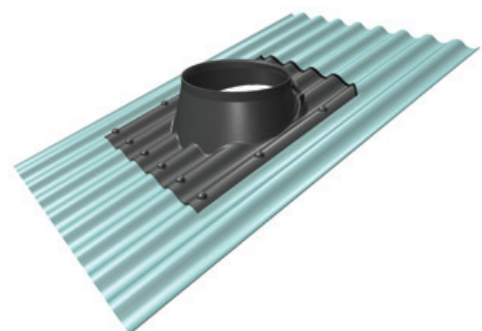
### STANDARD COMPONENTS



Paltech diffuser  
Ø200mm



Roof mounted fan



Branz Appraised Roof Flashing. Appraisal No. 665; 2017



## LIMITATIONS

---

- Where a sloping ceiling exists, Hometech to be engaged prior to ceiling lining.
- Sufficient replacement air is required for extract

efficiency. Replacement air can be achieved through opening a window or undercut to the door.

## INSTALLATION

---

To be carried out by Hometech to manufacturer's recommendations

- Roof mounted system installed with proprietary Hometech roof flashing (BRANZ Appraisal 665, 2017) and vent cap.
- Ceiling diffuser to be located on outside edge of shower

enclosure. With a shower over bath the diffuser will be located in the centre of the bath.

## PERFORMANCE & HOMESTAR® RATING

---

- The System extracts 316.8m<sup>3</sup>/h at the diffuser for Ø200mm flexible duct lengths up to 3m; when installed correctly with no access length and stretched as tight as possible.
- Homestar V4 - A bathroom extract has been installed in every bathroom and is ducted to outside.

- Exceeds G4 - 25l/s for showers & baths (90m<sup>3</sup>/h)  
<https://app.nuclino.com/login>  
login : kaingaora@hometech.co.nz  
password: Hometech2020

## WARRANTY

---

- Mechanical extract fan - 7 years

- Roof flashing - 10 years

### PRODUCT DESCRIPTION

Roof mounted in-line fan system venting to external roof cowl, used to provide mechanical bathroom extract ventilation. The motor services two rooms back-to-back.

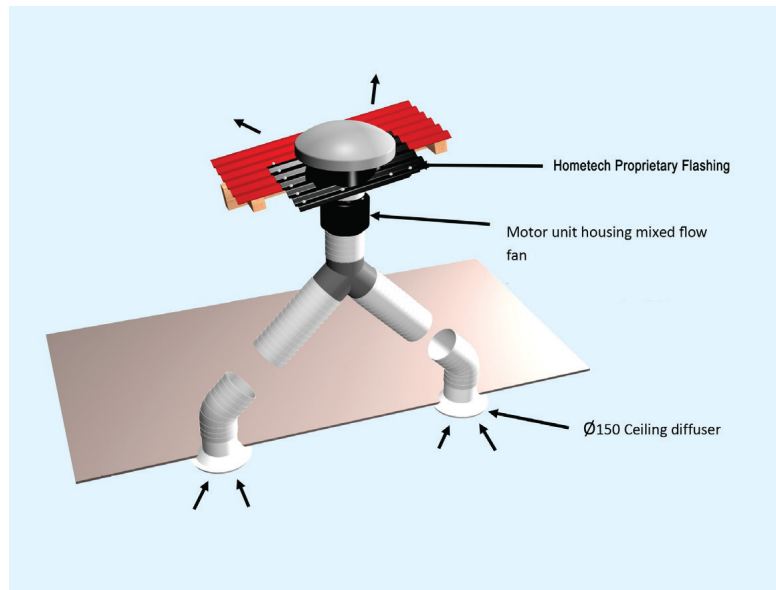
### APPLICATIONS

\*This system is suitable, but not limited to the following areas:

- Two rooms no more than 6m apart that require exhaust ventilation
- single level properties
- top floor installations
- where a minimum of 350mm of space is available
- between the ceiling and roof line
- in wet rooms such as bathrooms
- laundries

### SPECIFICATION MODEL: EX-2IL-TR-HF-T

<b>Airflow</b>	338.4m <sup>3</sup> /h (per room)
<b>Diameter</b>	150 Ø
<b>Duct Run</b>	3m (per room), no more than 6m separation
<b>Installation Location</b>	Wet rooms
<b>Minimum Roof Clearance</b>	350mm
<b>Rooms Served</b>	Two
<b>Ventilation Type</b>	Extract
<b>Filter</b>	NA
<b>Control</b>	Wall switch Optional: Timer



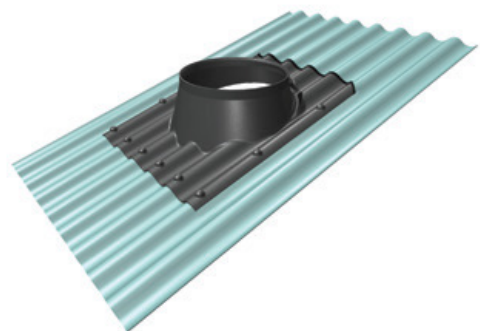
### STANDARD COMPONENTS



Paltech diffuser  
Ø150mm



Roof mounted fan



Branz Appraised Roof Flashing. Appraisal No. 665; 2017

## LIMITATIONS

---

- Where a sloping ceiling exists, the application is not able to be done.
- Sufficient replacement air is required for extract efficiency.
- Replacement air can be achieved through opening a window or undercut to the door.
- Requires ceiling access hatch to ensure system can be serviced.

## INSTALLATION

---

To be carried out by Hometech to manufacturer's recommendations.

- Roof mounted system installed with proprietary Hometech roof flashing (BRANZ Appraisal 665, 2017) and vent cap.

## PERFORMANCE & HOMESTAR® RATING

---

- The System extracts at total of 338.4m<sup>3</sup>/h at each diffuser for 2 x Ø150mm flexible duct lengths up to 3m; when installed correctly with no access length and stretched as tight as possible.
- Homestar V4 - A bathroom extract has been installed in every bathroom and is ducted to outside.
- Exceeds G4 - 25l/s for showers & baths (90m<sup>3</sup>/h)  
<https://app.nuclino.com/login>  
login : kaingaora@hometech.co.nz  
password: Hometech2020

## WARRANTY

---

- Mechanical extract fan - 7 years
- Roof flashing - 10 years

## PRODUCT DESCRIPTION

Roof mounted in-line fan system, venting to external roof cowl, used to provide mechanical extract ventilation.

System uses a 15 minute run-on timer.

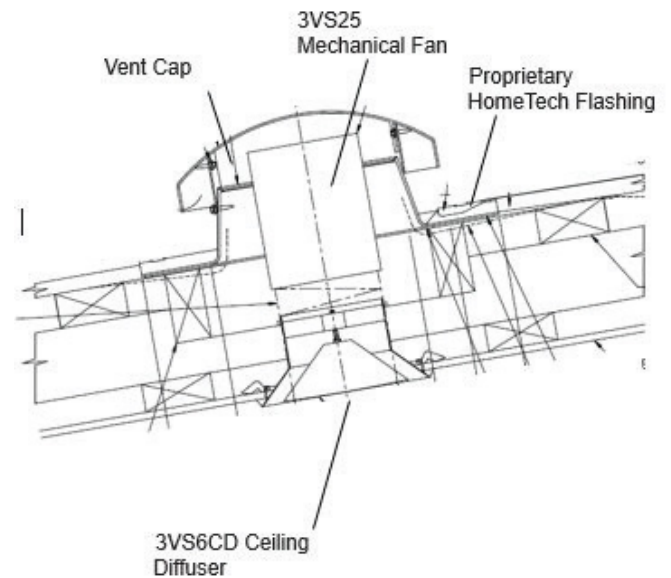
## APPLICATIONS

\*This system is suitable, but not limited to the following areas:

- flat roof
- sloping ceiling installations

## SPECIFICATION MODEL: EXILTRHFT

Airflow	270m <sup>3</sup> /h
Diameter	150 Ø
Duct Run	Up to 5m
Installation Location	Wet Rooms
Minimum Roof Clearance	Suitable for skillion ceilings
Rooms Served	One
Ventilation Type	Extract
Filter	NA
Control	Wall switch Optional: Timer Humidity sensor



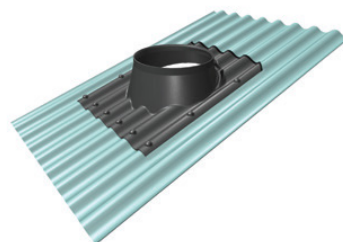
## STANDARD COMPONENTS



Paltech diffuser  
Ø150mm



Roof mounted fan



Branz Appraised Roof Flashing.  
Appraisal No. 665; 2017



Vent Cap

## LIMITATIONS

---

- Where a sloping ceiling exists, Hometech to be engaged prior to ceiling and wall lining to enable separate fan switch.
- Sufficient replacement air is required for extract efficiency. Replacement air can be achieved through opening a window or undercut to the door.

## INSTALLATION

---

To be carried out by Hometech to manufacturer's recommendations

- Roof mounted system installed with proprietary Hometech roof flashing (BRANZ Appraisal 665, 2017) and vent cap.
- Ceiling diffuser to be located on outside edge of shower enclosure. With a shower over bath the diffuser will be located in the centre of the bath.

## PERFORMANCE & HOMESTAR® RATING

---

- The System extracts 270m<sup>3</sup>/h at the diffuser for Ø150mm flexible duct lengths up to 5m; when installed correctly with no access length and stretched as tight as possible.
- Homestar V4 - A bathroom extract has been installed in every bathroom and is ducted to outside.
- Exceeds G4 - 25l/s for showers & baths (90m<sup>3</sup>/h)  
<https://app.nuclino.com/login>  
login : kaingaora@hometech.co.nz  
password: Hometech2020

## WARRANTY

---

- Mechanical extract fan - 7 years

## PRODUCT DESCRIPTION

Wall mounted 150mm mechanical ventilation fan to be situated on an exterior wall. Trade seal to be installed prior to cladding.

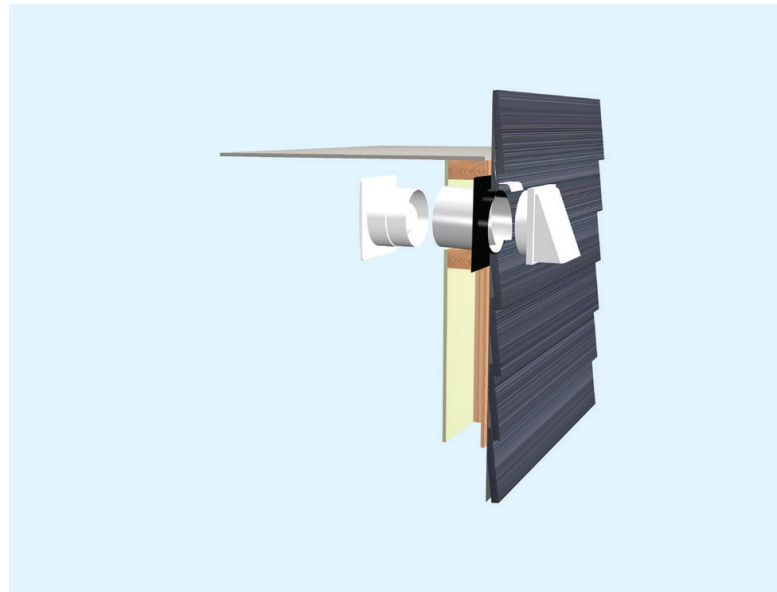
## APPLICATIONS

\*This system is suitable, but not limited to the following areas:

- where access to the roof space is unavailable
- room requiring ventilation as an exterior wall to vent through to outside
- bathrooms, internal laundries and toilets

## SPECIFICATION MODEL: EX-SURM-TW-HF-T

Airflow	252m <sup>3</sup> /h
Diameter	150 Ø
Duct Run	Back to back install
Installation Location	Wet Rooms
Minimum Roof Clearance	NA
Rooms Served	One
Ventilation Type	Extract
Filter	NA, includes back draft damper
Control	Wall switch Optional: Timer Humidity sensor



## STANDARD COMPONENTS



Wall Mounted fan



Weatherproof cowl with Ø150mm spigot



PVC Duct

## LIMITATIONS

---

- Requires access to an electrical connection.
- Sufficient replacement air is required for extract efficiency. Replacement air can be achieved through opening a window or undercut to a door.
- May require a small bulkhead to install this solution.

## INSTALLATION

---

To be carried out by Hometech to manufacturer's recommendations

- Trade seal to be installed prior to cladding. To be coordinated with main contractor.
- Solid duct sleeve protrusion to be flush with outside line of selected cladding. Allowance should be made for the cladding system when installing wall sleeve.
- Solid duct to be installed with slope to outside.
- Flexi-ducting to be pulled taut.
- Use weatherproof cowl on exterior wall.
- Header flashing and scribes to be supplied and installed by others.
- Timber support to be provided by others.

## PERFORMANCE & HOMESTAR® RATING

---

- The System extracts 252m<sup>3</sup>/h.
- Homestar V4 - A bathroom extract has been installed in every bathroom and is ducted to outside.
- Exceeds G4 - 25l/s for showers & baths (90m<sup>3</sup>/h)

<https://app.nuclino.com/login>  
login : kaingaora@hometech.co.nz  
password: Hometech2020

## WARRANTY

---

- Mechanical extract fan - 7 years
- Roof flashing - 10 years