



**hometech™**  
Better spaces. Better lives.

a division of Just Life Group Ltd

# KITCHEN FAN BOX VENTILATION - GROUND LEVEL INSTALL OF TWO STOREY PROPERTY

RHBOXWHT- 90-TW

## PRODUCT DESCRIPTION

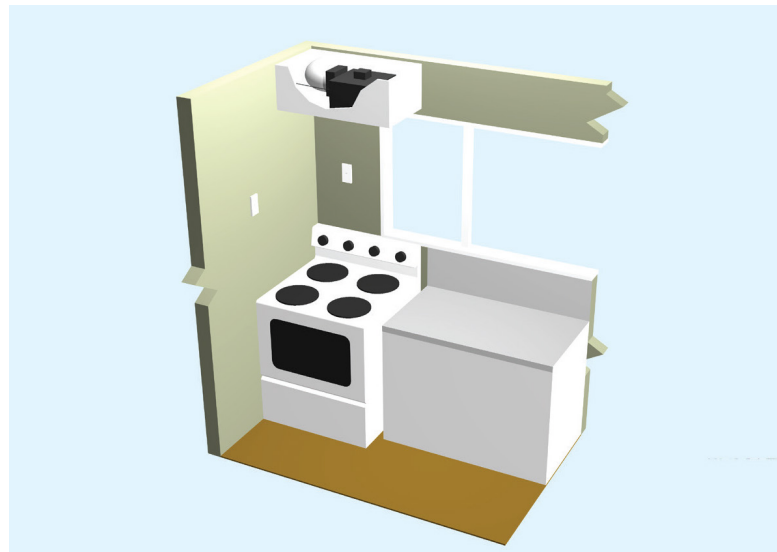
Provide kitchen fan box mechanical extract ventilation to exterior wall. Dimensions 907L x 310H x 410D. The fan box is fitted with a centrifugal fan and rangehood filter that is suitable for the filtering of fat, grease and the extraction of steam or odours when cooking. The filter is removable for easy cleaning or replacement.

## APPLICATIONS

\*This system is suitable, but not limited to the following areas:

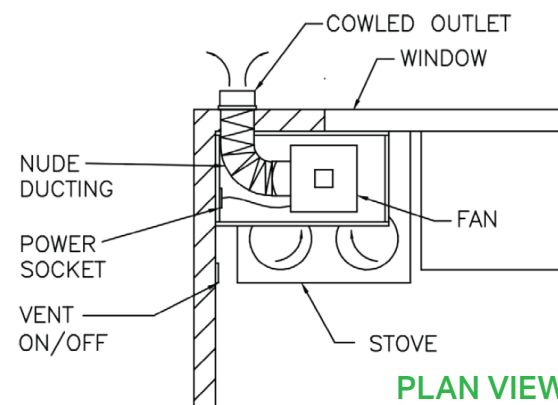
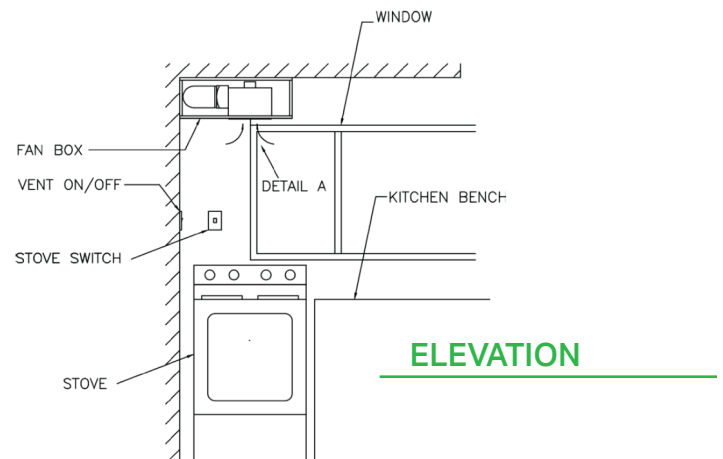
The Fan Box is an alternative to a rangehood, where the procurement item RH-CANWHT-60-TR Rangehood or a Ceiling Filter Box (RH-FILPAN-TR) cannot be installed in situations such as:

- When a window is directly behind the stove in the ground level of a two level property. The wall space must be less than 497mm which is the standard space for a rangehood installation.
- Can be used in single level installations when no other system is suitable.
- Vents to exterior wall using 150mm centrifugal fan.



## SPECIFICATION MODEL: RHBOXWHT-90-TW

Airflow	420m <sup>3</sup> /h
Diameter	150 Ø
Duct Run	Up to 6m
Installation Location	Kitchen
Minimum Roof Clearance	NA
Rooms Served	One
Ventilation Type	Kitchen Extract
Filter	Grease filter
Control	Wall switch



## LIMITATIONS

---

- Electrical supply may require surface capping.
- Additional costs may occur when exterior cladding is brick, concrete or asbestos.

## INSTALLATION

---

To be carried out by Hometech to manufacturer's recommendations

- as per scopers guide

## PERFORMANCE & HOMESTAR® RATING

---

- The System extracts 420m<sup>3</sup>/h at Rangehood intake for Ø150mm flexible duct lengths up to 6m; when installed correctly with no access length and minimal bends.
- Homestar V4 - A kitchen extract hood ducted to outside is mounted over the main steam source in the kitchen.
- Exceeds G4 - 50l/s for cooktops (180m<sup>3</sup>/h)  
<https://app.nuclino.com/login>  
login : kaingaora@hometech.co.nz  
password: Hometech2020

## WARRANTY

---

- Mechanical extract fan - 5 years