

PRODUCT DESCRIPTION

In-line extract fan exhausting from filter box at ceiling, to exterior roof-line for installations where there is a window above the stove. The system provides a maximum exhaust rate of 650m³/hr and is suitable for filtering grease and the extraction of steam or odours when cooking. The filter is removable for easy cleaning or replacement.

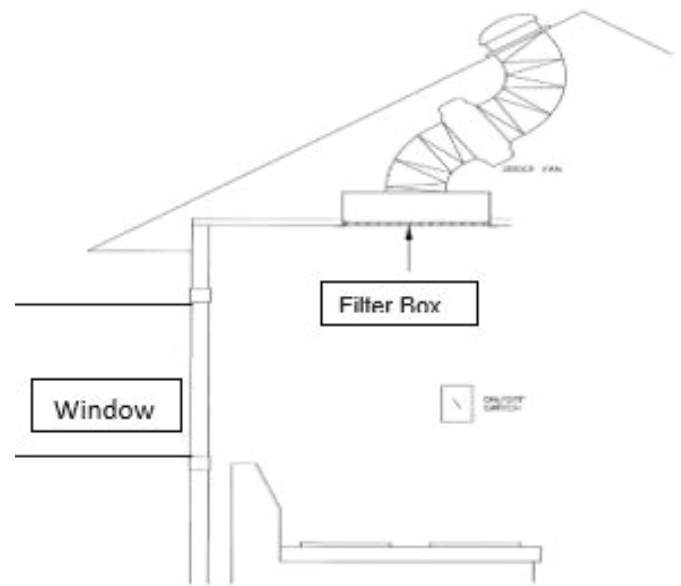
APPLICATIONS

*This system is suitable, but not limited to the following areas:

- when a window is directly to rear of the stove
- the stove is positioned on a cooking island workstation or half wall

SPECIFICATION MODEL: RH-FILPAN-TR

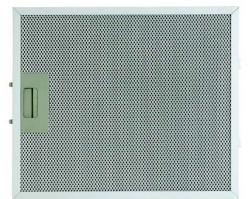
Airflow	650m ³ /h
Diameter	150 Ø
Duct Run	Up to 6m
Installation Location	Kitchen
Minimum Roof Clearance	500mm
Rooms Served	One
Ventilation Type	Kitchen Extract
Filter	Grease Filter
Control	Wall switch



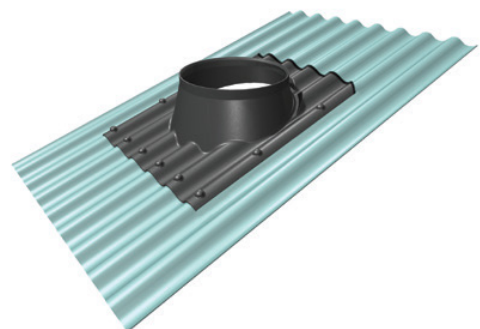
STANDARD COMPONENTS



In-line Fan



Filter ATFL5382601



Branz Appraised Roof Flashing. Appraisal No. 665; 2017

LIMITATIONS

- Requires a ceiling void of more than 500mm
- Filter box may not be exactly centred over the stove due to ceiling joists.
- Cannot be installed when a kitchen is on the ground.

INSTALLATION

To be carried out by Hometech to manufacturer's recommendations

- To be ducted vertically to exterior with proprietary Hometech roof flashing and cowl wherever possible.
- Installed over the cook-top within the safe zone.

PERFORMANCE & HOMESTAR® RATING

- The System extracts 650m³/h at Rangehood intake for Ø150mm flexible duct lengths up to 6m; when installed correctly with no access length and minimal bends.
- Homestar V4 - A kitchen extract hood ducted to outside is mounted over the main steam source in the kitchen.
- Exceeds G4 - 50l/s for cooktops (180m³/h)
<https://app.nuclino.com/login>
login : kaingaora@hometech.co.nz
password: Hometech2020

WARRANTY

- Mechanical extract fan & filter box - 5 years
- Roof flashing - 10 years